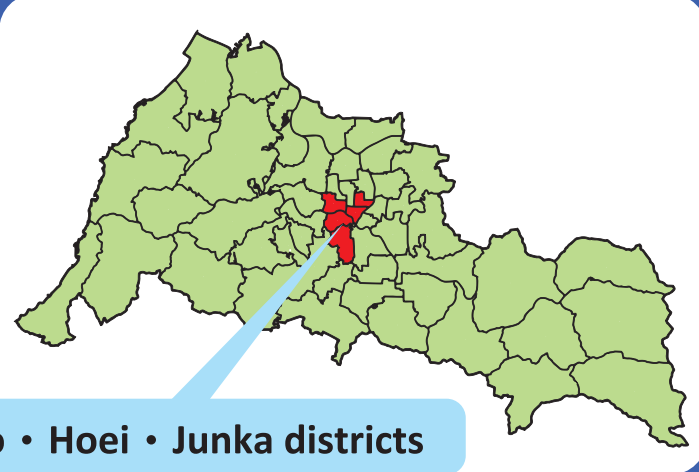


Fukui City
Flood & Landslide Hazard Map
Detailed map of each district



Rivers that flow through this area

Asuwa River Ebata River
Sokobami River Kitsuunegawa River
Furukawa River Arakawa River

Points to consider when viewing this map

The flooding areas and their inundation depths depicted on this map are estimated based on many points of possible embankment collapses and their maximum effect.
It is not likely that all areas will be flooded at once.

Legend For the latest evacuation shelter information, please check Fukui City's website.

First available designated shelter
First available evacuation shelter in the district as the risk of a disaster increases

Designated shelter
Evacuation shelters where local residents
• who evacuate due to the threat of disaster can stay for the necessary period of time until the danger goes away
• who are unable to return to their home as a result of damages caused by a disaster can stay temporarily
※ Please be careful as it may not be opened.

District boundaries

Area boundaries
National road and prefectural road
Water level monitoring station
Live camera

Dangerous areas during flooding
underground passage (for cars and pedestrians)
underground passage (for pedestrians only)
underground car park

Criteria for inundation depth

over the 3rd floor
2nd floor
1st floor
under the floor

over 5.0m purple
3.0 to less than 5.0m pink
0.5 to less than 3.0m orange
less than 0.5m yellow

For more information on inundation depth...
Fukui Prefecture Flood Damage Hazard Information

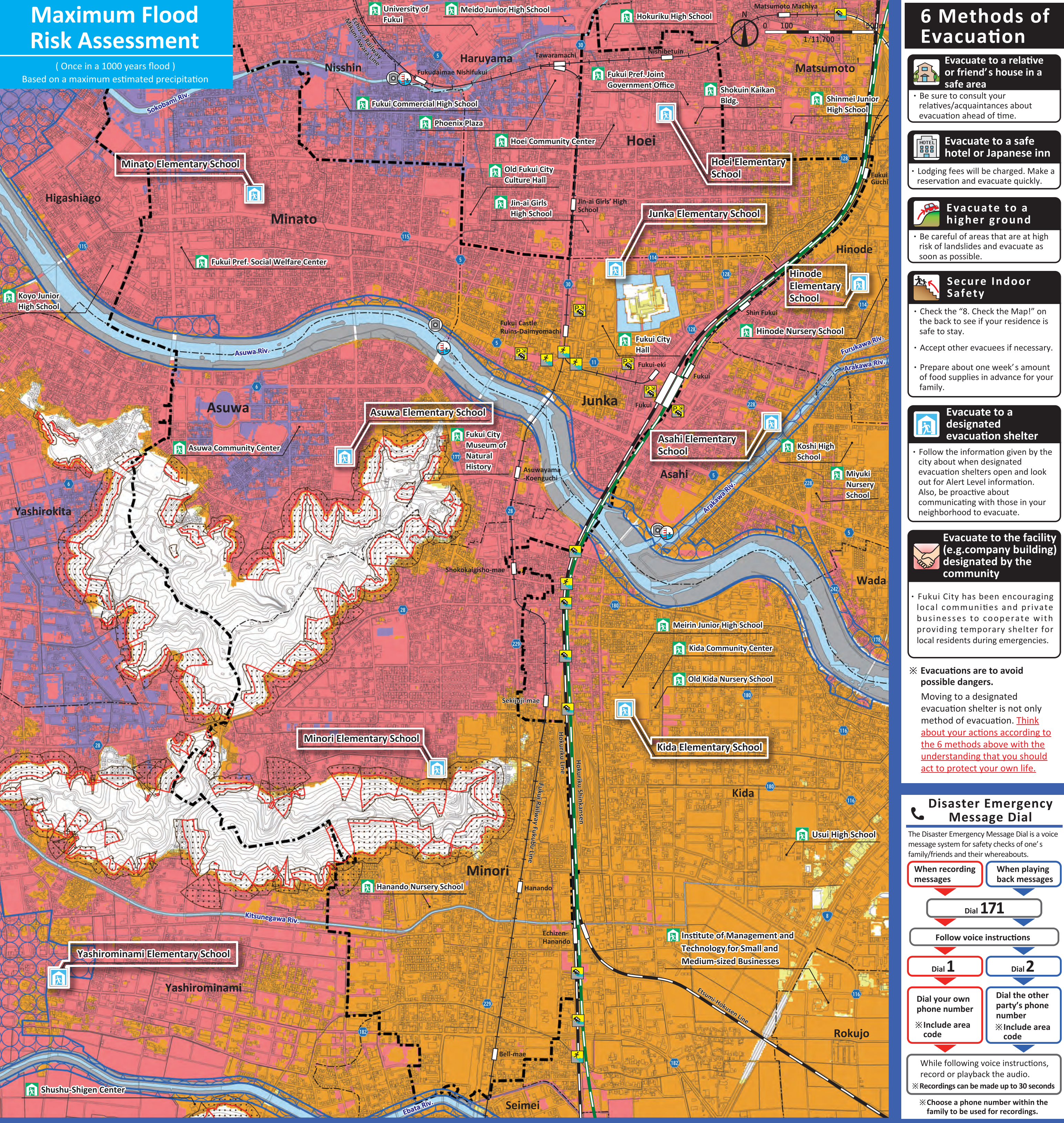
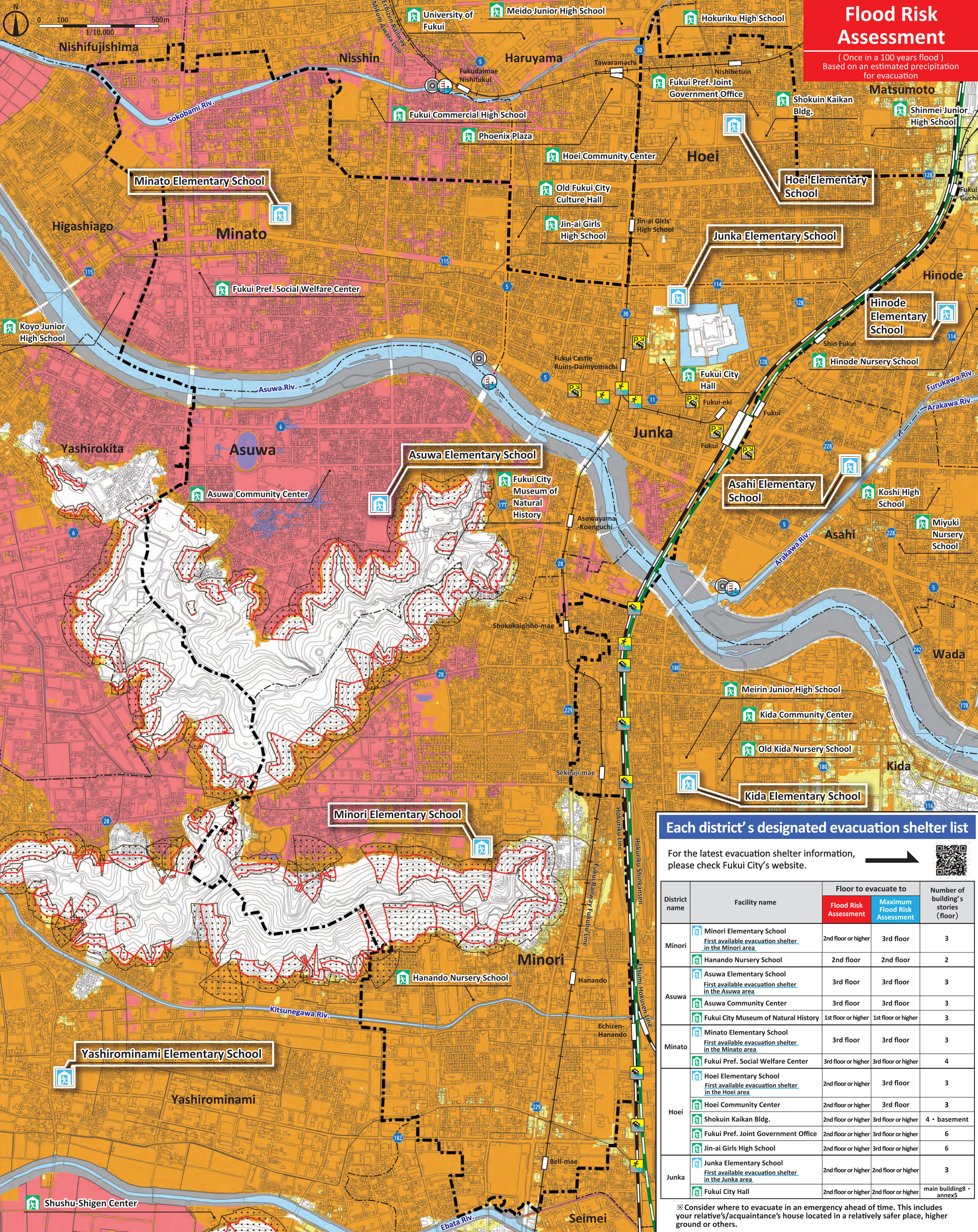
Areas at risk of landslides

Landslide Caution Zone (Yellow Zone)
Areas where landslides may cause death or injury to residents when they occur

Landslide Special Caution Zone (Red Zone)
Areas where landslides may cause structural damage as well as death or significant injury to residents when they occur


Areas where houses may collapse or be washed away due to strong currents
Areas where strong flood flows/embankment collapses may cause to destroy or wash away houses/buildings












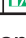


Flood Destruction Zone
Only applies to the "Maximum Flood Risk Assessment"



Each district's designated evacuation shelter list

For the latest evacuation shelter information, please check Fukui City's website.



District name	Facility name	Floor to evacuate to		Number of building's stories (floor)
		Flood Risk Assessment	Maximum Flood Risk Assessment	
Minori	 Minori Elementary School First available evacuation shelter in the Minori area	2nd floor or higher	3rd floor	3
	 Hanando Nursery School	2nd floor	2nd floor	2
Asuwa	 Asuwa Elementary School First available evacuation shelter in the Asuwa area	3rd floor	3rd floor	3
	 Asuwa Community Center	3rd floor	3rd floor	3
	 Fukui City Museum of Natural History	1st floor or higher	1st floor or higher	3
Minato	 Minato Elementary School First available evacuation shelter in the Minato area	3rd floor	3rd floor	3
	 Fukui Pref. Social Welfare Center	3rd floor or higher	3rd floor or higher	4
Hoei	 Hoei Elementary School First available evacuation shelter in the Hoei area	2nd floor or higher	3rd floor	3
	 Hoei Community Center	2nd floor or higher	3rd floor	3
	 Shokuin Kaikan Bldg.	2nd floor or higher	3rd floor or higher	4 + basement
Junka	 Fukui Pref. Joint Government Office	2nd floor or higher	3rd floor or higher	6
	 Jin'ai Girls High School	2nd floor or higher	3rd floor or higher	6
	 Junka Elementary School First available evacuation shelter in the Junka area	2nd floor or higher	2nd floor or higher	3
	 Fukui City Hall	2nd floor or higher	2nd floor or higher	main buildings + annexes

※ Consider where to evacuate in an emergency ahead of time. This includes your relative's/acquaintance's house located in a relatively safer place, higher ground or others.

6 Methods of Evacuation

- Evacuate to a relative or friend's house in a safe area**
• Be sure to consult your relatives/acquaintances about evacuation ahead of time.
- Evacuate to a safe hotel or Japanese inn**
• Lodging fees will be charged. Make a reservation and evacuate quickly.
- Evacuate to a higher ground**
• Be careful of areas that are at high risk of landslides and evacuate as soon as possible.
- Secure Indoor Safety**
• Check the "B. Check the Map!" on the back to see if your residence is safe to stay.
• Accept other evacuees if necessary.
• Prepare about one week's amount of food supplies in advance for your family.
- Evacuate to a designated evacuation shelter**
• Follow the information given by the city about when designated evacuation shelters open and look out for Alert Level information. Also, be proactive about communicating with those in your neighborhood to evacuate.
- Evacuate to the facility (e.g. company building) designated by the community**
• Fukui City has been encouraging local communities and private businesses to cooperate with providing temporary shelter for local residents during emergencies.

※ Evacuations are to avoid possible dangers.
Moving to a designated evacuation shelter is not only method of evacuation. **Think about your actions according to the 6 methods above with the understanding that you should act to protect your own life.**

Disaster Emergency Message Dial

The Disaster Emergency Message Dial is a voice message system for safety checks of one's family/friends and their whereabouts.

When recording messages **When playing back messages**

Dial 171

Follow voice instructions

Dial 1 **Dial 2**

Dial your own phone number **Dial the other party's phone number**
※ Include area code ※ Include area code

While following voice instructions, record or playback the audio.
※ Recordings can be made up to 30 seconds
※ Choose a phone number within the family to be used for recordings.

How to get information Staying updated on information during a disaster is essential. Prepare for getting information through multiple sources by checking beforehand.

Information DELIVERED to us

Emergency Broadcast System
To confirm the contents of broadcasted information...

Fukui City Disaster Prevention Weather Info Email
Evacuation alerts, weather forecasts, etc. will be provided by Fukui City.

LINE
Alert levels and evacuation information can be received here.

Yahoo! Disaster Prevention Prompt Report
(app.)
Evacuation information and weather forecasts can be received here.

i-ame Mail
(Comprehensive information on rivers and "SABO" in Fukui Prefecture)
Flood and landslide information will be provided here.

Information we can GATHER

TV & radio
Latest information of disaster and evacuation can be obtained by pressing the "d - button" on your TV. Radios are a good way to get information during blackouts.

Fukui City website
Weather forecasts, evacuation information, and other emergency information can be found here.

Facebook
@Fukui.city

Twitter
@Fukucity_Bosai

Meteorological Agency
Precipitation levels, weather forecasts, etc. can be found here.

Comprehensive information on rivers and "SABO" in Fukui Prefecture
Frequently updated photos of rivers and water level readings can be found here.

River information by the Ministry of Land, Infrastructure, Transport and Tourism

Approved by the Director of the Geographical Survey Institute based on the Survey Act (for use) R21H: 853 | Inquiries / Hazard Map information: River Division (0776-20-5492) Evacuation information: Crisis Management Division (0776-20-5234) [Printed Sep. 2021]