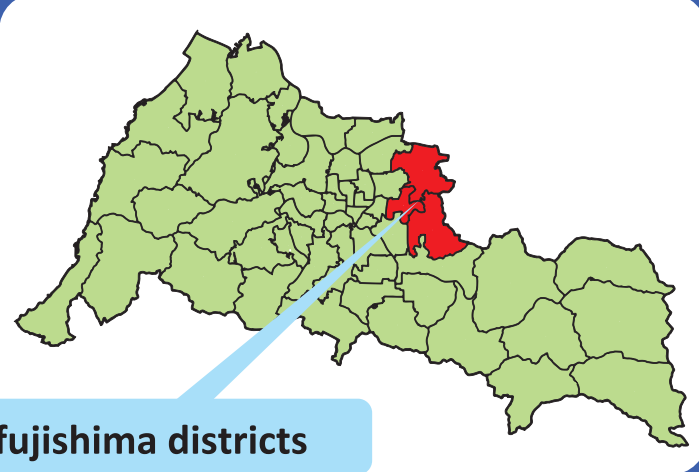


Fukui City
Flood & Landslide Hazard Map
Detailed map of each district



Rivers that flow through this area
Kuzuryu River Asuwa River
Arakawa River Furukawa River

Points to consider when viewing this map
The flooding areas and their inundation depths depicted on this map are estimated based on many points of possible embankment collapses and their maximum effect.
It is not likely that all areas will be flooded at once.

Legend For the latest evacuation shelter information, please check Fukui City's website.

First available designated shelter
First available evacuation shelter in the district as the risk of a disaster increases

Designated shelter
Evacuation shelters where local residents
• who evacuate due to the threat of disaster can stay for the necessary period of time until the danger goes away
• who are unable to return to their home as a result of damages caused by a disaster can stay temporarily
※ Please be careful as it may not be opened.

District boundaries
Area boundaries
National road and prefectural road
Water level monitoring station
Live camera

Criteria for inundation depth

over the 3rd floor
2nd floor
1st floor
under the floor

over 5.0m purple
3.0 to less than 5.0m pink
0.5 to less than 3.0m orange
less than 0.5m yellow

Dangerous areas during flooding
underground passage (for cars and pedestrians)
underground passage (for pedestrians only)
underground car park

For more information on inundation depth...
Fukui Prefecture Flood Damage Hazard Information

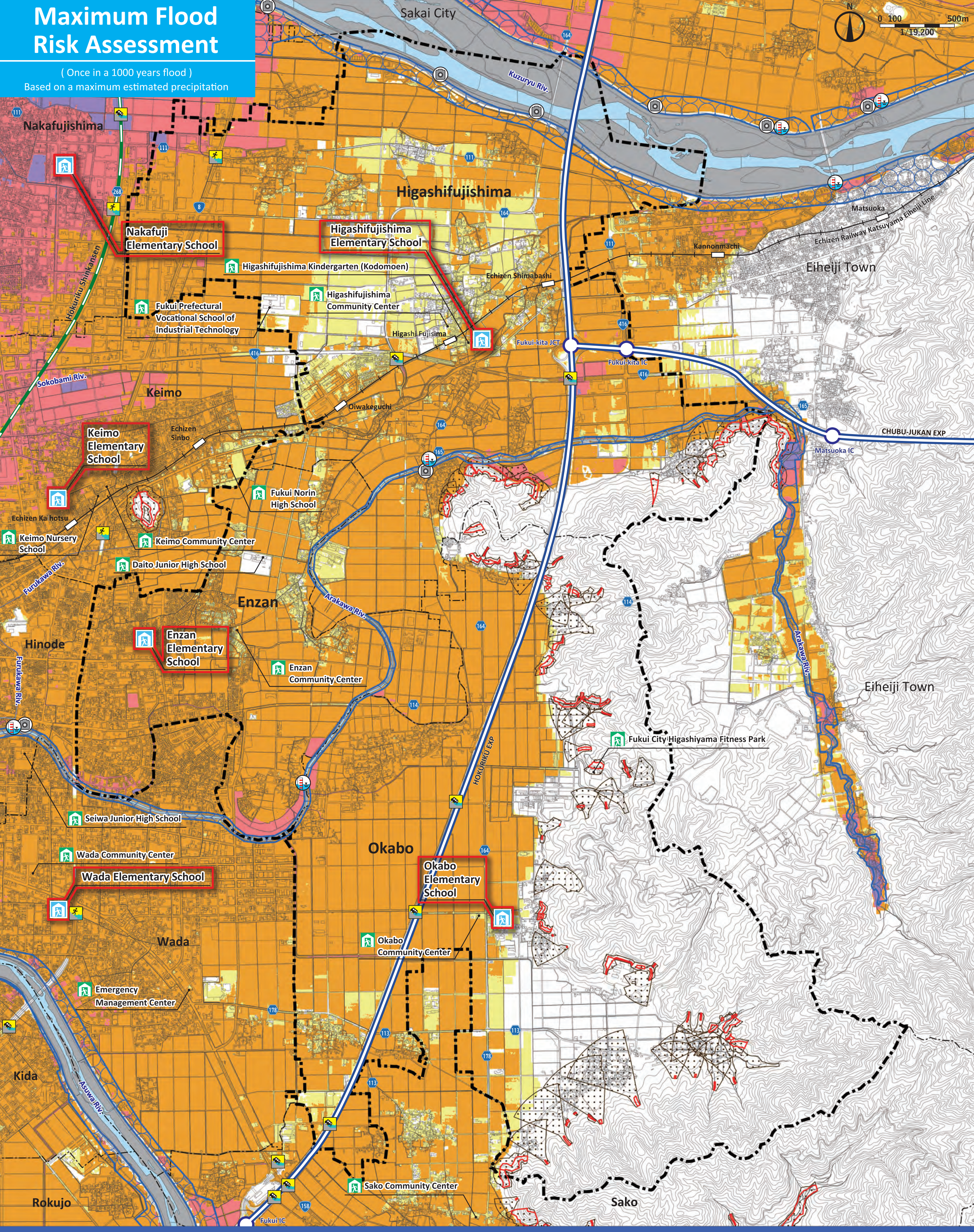
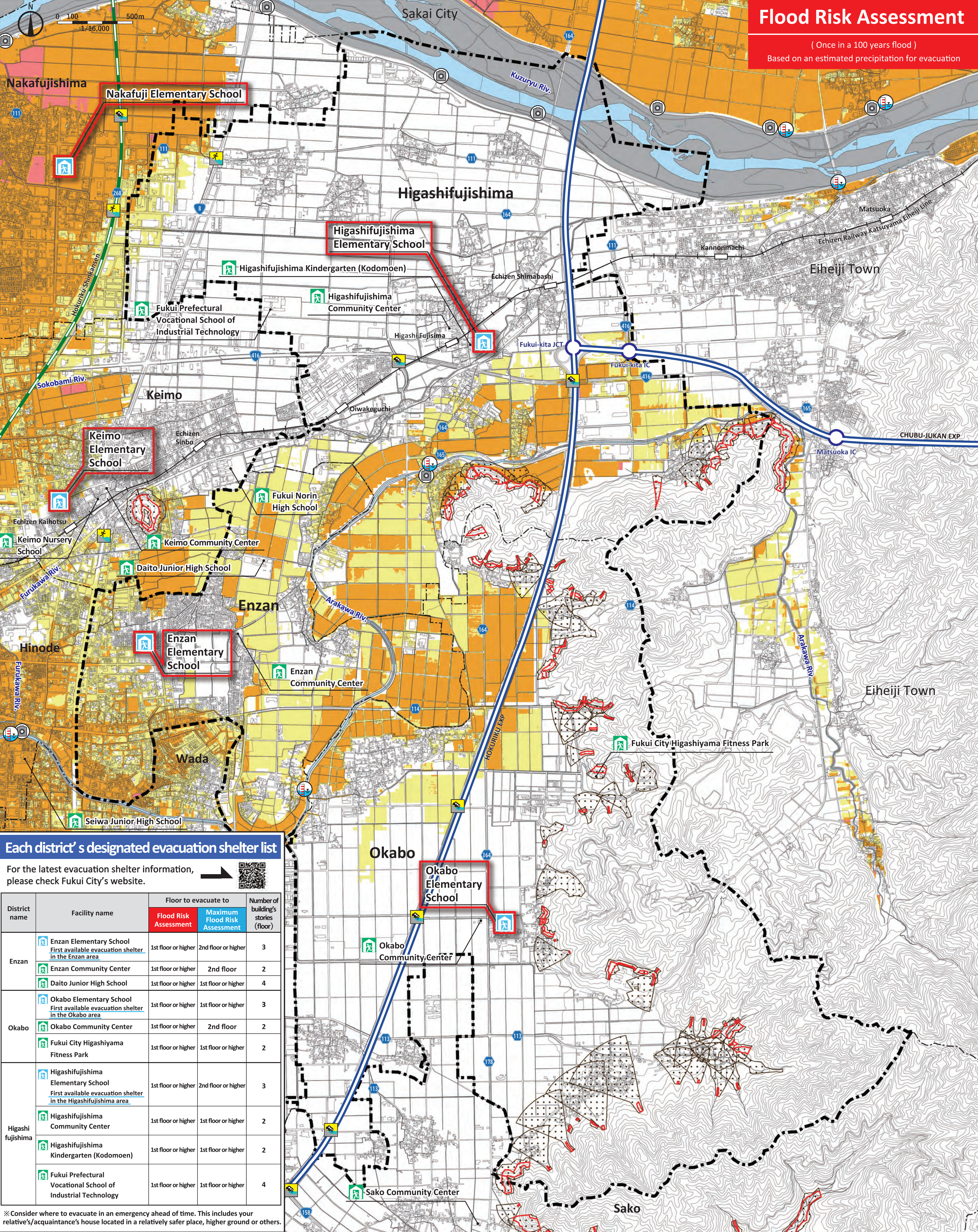
Areas at risk of landslides
Landslides may cause sudden and heavy damages. Landslides may still occur after the rain has weakened so caution is needed.

Landslide Caution Zone (Yellow Zone)
Areas where landslides may cause death or injury to residents when they occur

Landslide Special Caution Zone (Red Zone)
Areas where landslides may cause structural damage as well as death or significant injury to residents when they occur

Areas where houses may collapse or be washed away due to strong currents
Areas where strong flood flows/embankment collapses may cause to destroy or wash away houses/buildings

Flood Destruction Zone
Only applies to the "Maximum Flood Risk Assessment"



Each district's designated evacuation shelter list

For the latest evacuation shelter information, please check Fukui City's website.

District name	Facility name	Floor to evacuate to	Number of building's stories (floor)
		Flood Risk Assessment	Maximum Flood Risk Assessment
Enzan	Enzan Elementary School First available evacuation shelter in the Enzan area	1st floor or higher	2nd floor or higher
	Enzan Community Center	1st floor or higher	2nd floor
	Daito Junior High School	1st floor or higher	1st floor or higher
Okabo	Okabo Elementary School First available evacuation shelter in the Okabo area	1st floor or higher	1st floor or higher
	Okabo Community Center	1st floor or higher	2nd floor
Higashi-fujishima	Higashifujishima Elementary School First available evacuation shelter in the Higashifujishima area	1st floor or higher	2nd floor or higher
	Higashifujishima Community Center	1st floor or higher	1st floor or higher
Higashi-fujishima	Higashifujishima Kindergarten (Kodomoen)	1st floor or higher	1st floor or higher
	Fukui Prefectural Vocational School of Industrial Technology	1st floor or higher	1st floor or higher

※ Consider where to evacuate in an emergency ahead of time. This includes your relative's/acquaintance's house located in a relatively safer place, higher ground or others.

6 Methods of Evacuation

- Evacuate to a relative or friend's house in a safe area**
• Be sure to consult your relatives/acquaintances about evacuation ahead of time.
- Evacuate to a safe hotel or Japanese inn**
• Lodging fees will be charged. Make a reservation and evacuate quickly.
- Evacuate to a higher ground**
• Be careful of areas that are at high risk of landslides and evacuate as soon as possible.
- Secure Indoor Safety**
• Check the "8. Check the Map!" on the back to see if your residence is safe to stay.
• Accept other evacuees if necessary.
• Prepare about one week's amount of food supplies in advance for your family.
- Evacuate to a designated evacuation shelter**
• Follow the information given by the city about when designated evacuation shelters open and look out for Alert Level information. Also, be proactive about communicating with those in your neighborhood to evacuate.
- Evacuate to the facility (e.g. company building) designated by the community**
• Fukui City has been encouraging local communities and private businesses to cooperate with providing temporary shelter for local residents during emergencies.

※ Evacuations are to avoid possible dangers.
Moving to a designated evacuation shelter is not only method of evacuation. **Think about your actions according to the 6 methods above with the understanding that you should act to protect your own life.**

Disaster Emergency Message Dial
The Disaster Emergency Message Dial is a voice message system for safety checks of one's family/friends and their whereabouts.

When recording messages **When playing back messages**

Dial 171
Follow voice instructions

Dial 1 **Dial 2**

Dial your own phone number **Dial the other party's phone number**
※ Include area code

While following voice instructions, record or playback the audio.
※ Recordings can be made up to 30 seconds
※ Choose a phone number within the family to be used for recordings.

How to get information Staying updated on information during a disaster is essential. Prepare for getting information through multiple sources by checking beforehand.

Information DELIVERED to us You must register via these QR codes or other methods ahead of time to receive notifications.

- Emergency Broadcast System**
To confirm the contents of broadcasted information...
- Fukui City Disaster Prevention Weather Info Email**
Evacuation alerts, weather forecasts, etc. will be provided by Fukui City.
- LINE**
Alert levels and evacuation information can be received here.
- Yahoo! Disaster Prevention Prompt Report** (app.)
Evacuation information and weather forecasts can be received here.
- i-ame Mail** (Comprehensive information on rivers and "SABO" in Fukui Prefecture)
Flood and landslide information will be provided here.

Information we can GATHER

- TV & radio**
Latest information of disaster and evacuation can be obtained by pressing the "d - button" on your TV. Radios are a good way to get information during blackouts.
- Fukui City website**
Weather forecasts, evacuation information, and other emergency information can be found here.
- Facebook**
@Fukui.city
- Twitter**
@Fukuicity_Bosai
- Meteorological Agency**
Precipitation levels, weather forecasts, etc. can be found here.
- Comprehensive information on rivers and "SABO" in Fukui Prefecture**
Frequently updated photos of rivers and water level readings can be found here.
- River information by the Ministry of Land, Infrastructure, Transport and Tourism**

Approved by the Director of the Geographical Survey Institute based on the Survey Act (for use) R21H: 853 | Inquiries / Hazard Map information: River Division (0776-20-5492) Evacuation information: Crisis Management Division (0776-20-5234) [Printed Sep. 2021]