

Make a  
disaster-ready  
community  
that's safe  
and great  
to live in



# Fukui City Disaster Prevention Handbook



# What should we do in case of a storm or a flood?

Imagine what you should do in case of emergency.



You can predict a storm and flood damage by checking weather information to some extent. Obtain information from the TV or radio and pay attention to an evacuation information (evacuation advisory or etc.).

You should evacuate if you think you are in danger, even if there is no evacuation information.



## Evacuation procedures

Voluntary evacuation

Evacuation advisory is issued by Fukui City

Check the surrounding situation

If you think it is safe to go outside

Move to **Kominkan, Community Center** (emergency shelter)

If you think it is dangerous to go to your emergency shelter

Stay on the second floor of your house or move to the upper floor of a nearby building

\* Wait for a rescue at a safe place

## Evacuation information

### Prepare for evacuation

#### Evacuation Notice

Prepare to evacuate and pay attention to the information from the radio or TV. **People who cannot evacuate swiftly should start evacuating to your emergency shelter.**

### Start evacuating

#### Evacuation advisory

Start evacuating

### Evacuate immediately!!

#### Evacuation Order

There is imminent danger. **Complete your evacuation** as soon as possible.

Disaster information will be notified to the residents by the radio, TV or other means. Check the location of your emergency shelter and the evacuation routes in advance.

Provide care and support for the elderly and children and evacuate together.

## 1 Turn off the gas and other fuel sources

Before evacuating, turn off the circuit breaker and the gas at the main valve, and lock the door and windows.



Early evacuation  
saves your life



## 2 Inform of your evacuation

Inform your family members, relatives and friends of the shelter you will go to.



## 3 Evacuate immediately and safely

Early evacuation is highly recommended.



## 4 Put on athletic shoes when evacuating

Athletic shoes are the best to wear when you evacuate. Rain boots become heavy and are difficult to walk with when flood water gets into them. It is dangerous to walk barefoot. You may get hurt by stepping on something dangerous.



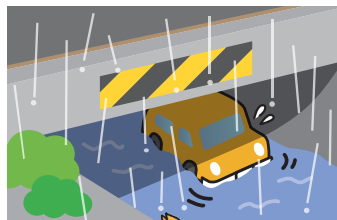
## 5 Support children and the elderly to evacuate safely

Provide support for the elderly and the handicapped, and evacuate together. Carry them on your back, if necessary.



## 6 Stay out of the basement or low ground area

It is dangerous to stay in the basement level when it rains heavily. The place may be flooded by rainwater.



## 7 Move to the upper floor, if the flood water has already reached to your house

When it is dangerous to evacuate due to the water, move to the upper floor of the building and wait for a rescue or wait until the water recedes.



# What should you do in case of an earthquake?

Imagine what you should do in case of emergency.

## Actions you should take and evacuation procedures when an earthquake occurs.

### Earthquake Early Warning



Be alerted before it occurs

### If you receive an Earthquake Early Warning

- Protect your head and shelter under a sturdy table
- Don't rush outside



## Earthquake

- Keep calm and secure your safety
- Open the door to secure a way out
- Watch out for broken glasses or falling objects



1 to 3 mins

- Turn off the gas or other fire resources, after tremors stop
- Confirm your family's safety
- Put on your shoes to prevent injuries from broken glasses and be ready to escape



3 to 5 mins

- Take an emergency supplies kit
- Check the conditions of your neighborhood
- Get information from the radio or other media



Secure your safety, and then go to a temporary evacuation site such as a park.

Members of local voluntary group for disaster prevention should gather and confirm the safety of the residents and the damages caused by the disaster.

If you need to evacuate because of the damages on your house,

**Go to your emergency shelter  
(nearby elementary school)**

In case of earthquake, community centers will be used as bases of operations of the disaster prevention organizations.

If the elementary school is damaged by the disaster and dangerous to stay or have no places for refugees, go to nearby junior high school or other public facilities designated as shelters by the City.





Imagine what to do  
in case of emergency  
on regular basis!



We do not know when and where a disaster occurs. Do not panic if you encounter a disaster when away home. Keep calm and wait until tremors stop and then escape, rescue others or go home.

### 1 If you are outdoors

- Stay away from concrete-block walls or vending machines. Watch out for the falling objects like a sign board.



### 2 If you are in an elevator

- Press the buttons of all floors. Get off of an elevator when it stops. Use stairways to go down to evacuate.
- If you are stuck in an elevator, keep pressing an emergency button and use an emergency phone to call for rescue.



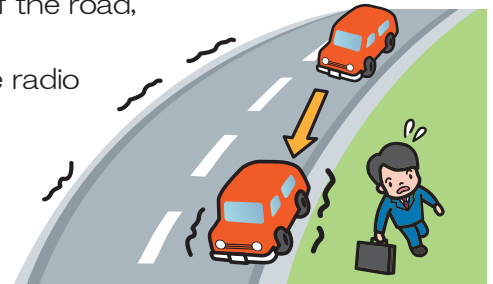
### 3 If you are at school

- Public elementary schools and junior high schools in Fukui City will basically keep students at school if an intensity 5 or bigger earthquake occurs. After the safety check, make the students go home with their parent accompanied by.
- Follow the instructions in the “Disaster Prevention Manual” of each school.



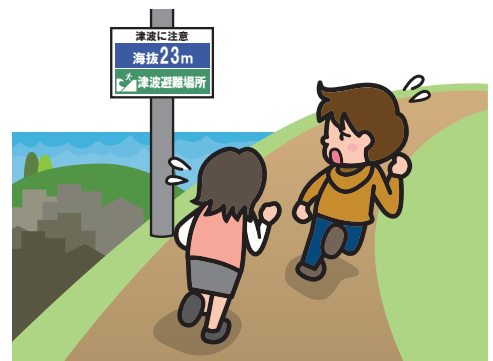
### 4 If you are driving a car

- Hold a steering wheel firmly, speed down little by little, pull off the road, stop your car and turn off the engine.
- Do not get out from your car until tremors stop. Listen to the radio to get information of earthquake.
- Leave the key in your car. (The car may be moved when it blocks traffic.) Do not lock the car.
- Take your valuables such as a vehicle inspection certificate with you.



### 5 If you are near the ocean

- If you feel an earthquake or receive Tsunami warning, remember that protecting yourself is the first priority. You should always evacuate immediately.
- When you evacuate, keep in mind that you should go to higher ground. It does not always mean to go far away from the ocean.



# What should you do in case of Tsunami?



Do not be obsessed with going to your evacuation site or shelter.

Go to the **higher** ground than the coast area at first!!

## Three important things to remember about Tsunami

<b>1</b>	<b>Go to a safe place immediately after an earthquake occurs</b>	If you feel an earthquake, leave coastal areas immediately and evacuate to safer places such as high grounds or hills. Do not wait until you receive evacuation information from the TV or radio. Evacuate first to a safe place, and then check the Tsunami information.
<b>2</b>	<b>Tsunami will arrive repeatedly</b>	Remain in a safe place until Tsunami warnings or advisories are cleared since tsunami will arrive repeatedly.
<b>3</b>	<b>Evacuate on foot</b>	If you use your car, you may cause a traffic jam. To run away from tsunami immediately, you should evacuate on foot. However, there are some areas where you should use a car for evacuation. Discuss on what to do with the residents of your area in advance.

## Categories of Tsunami warnings/advisories

Estimated tsunami heights		Category	Expected damages
Quantitative expression (Indication)	Qualitative expression		
Over 10 meters ( $10\text{m} < \text{Height}$ ) --- 10m ( $5\text{m} < \text{Height} \leq 10\text{m}$ ) 5m ( $3\text{m} < \text{Height} \leq 5\text{m}$ )	Huge	Major Tsunami Warning	Wooden houses are destroyed completely or washed away. People may be caught in tsunami currents.
3m ( $1\text{m} < \text{Height} \leq 3\text{m}$ )	High	Tsunami Warning	Tsunami will hit and cause damages to lowland areas and buildings will be flooded. People may be caught in tsunami currents.
1m ( $20\text{cm} \leq \text{Height} \leq 1\text{m}$ )	(N/A)	Tsunami Advisory	People may be caught in strong currents in the sea. Culturing rafts will be washed away and small boats may capsize.
Slight sea level changes No tsunami	(N/A)	Tsunami Information	



## Flow of Tsunami evacuation

# Earthquake!!

### Actions to take

Secure your safety, turn off the gas or other fuel resources

### Go to your tsunami evacuation site

Follow the instructions on the Tsunami Evacuation Signage

### Getting information • Safety confirmation

TV, radio or disaster information email service, etc.

If your house  
is at **danger**

Go to your shelter

### Warnings are cleared

If your house  
is **safe**

Go home

## Utilize Fukui City Tsunami Hazard Map

Tsunami Hazard Map shows evacuation zones, shelters and evacuation routes in case of tsunami.

### Check it out!




Tsunami Warning (Provided by NHK)

## Tsunami Evacuation Signage

Tsunami Evacuation Signage is set up in coastal areas to assist people's evacuation in case of tsunami.

The signage is useful for actual evacuation from tsunami. Also, you can learn altitudes in the areas of your neighborhood.

Check the Tsunami Evacuation Signage in your neighborhood to make a right decision in case of emergency.



Tsunami Evacuation Signage



# What is Nuclear Hazard?

## Nuclear Power Plants in Fukui prefecture

Fukui prefecture has 15 nuclear power plants.

The nearest plant to Fukui City is the Japan Atomic Power Company, Tsuruga Power Plant.

## Monitoring

Radiation dose in Fukui City is constantly monitored at Koshino Furusato Museum (Ikura-cho) and Fukui Prefectural Environmental Radiation Research and Monitoring Center Fukui Analytical Management Office (Harama-cho). You can check the monitored date either on HP of Nuclear Regulation Authority, Ministry of Environment or Radiation Dose Display Device at Fukui City Hall.

### Check it out!

Radiation Monitoring Information

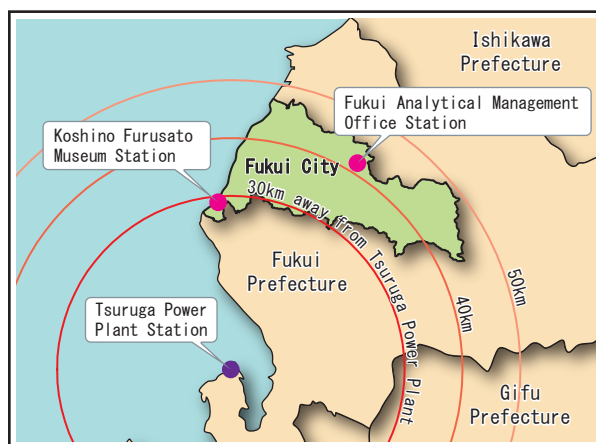
Search



Radiation Monitoring Device  
(Koshino Furusato Museum)

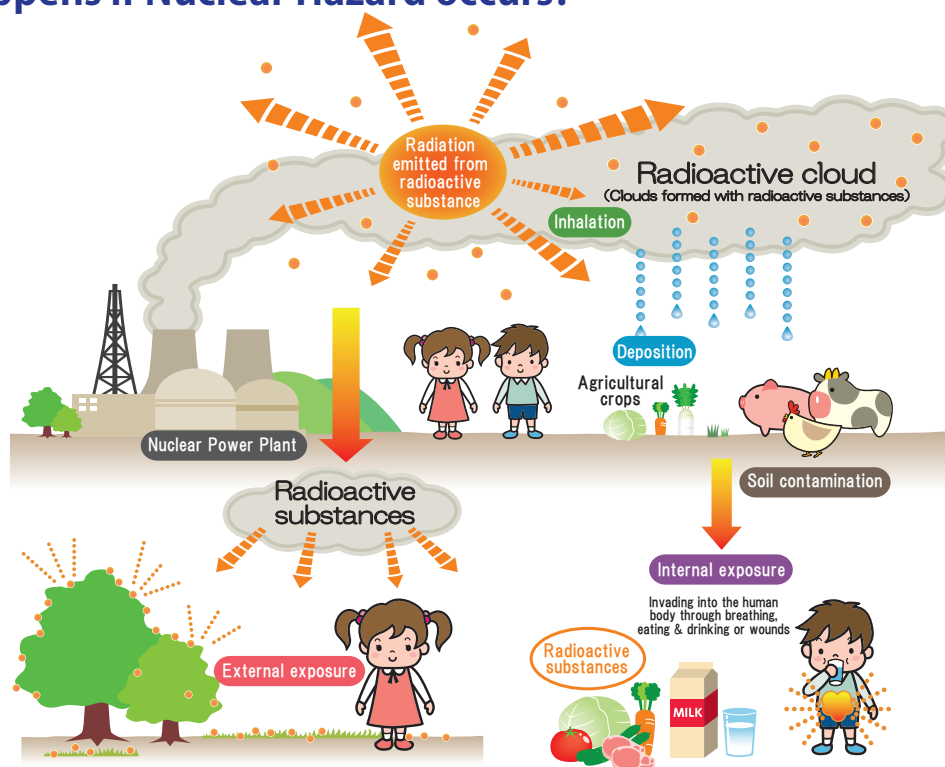


Radiation Dose Display Device  
(Fukui City Hall)



Radiation Dose Observation Stations in Fukui City

## What happens if Nuclear Hazard occurs?



When nuclear hazard occurs, there is the threat of the release of radioactive substances. Pay attention not only to external exposure, but also internal exposure by eating radiation-contaminated food.

## If you receive a “Sheltering indoors” order

Fukui City will be informed by Japanese government or Fukui Prefecture, if an abnormal condition occurs at Nuclear Power Plant.

Fukui City will inform the residents of disaster information through an emergency municipal radio communication system or an emergency alert email.

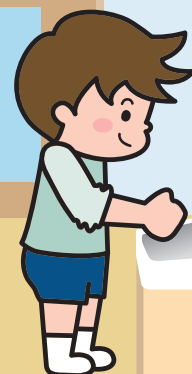
When you are outdoors, move into a nearby building. Pay attention to the information and stay inside.

### Stop airflow from outside

Turn off air conditioner/ventilating fan (things let the outside air flows in).



### Close all the doors and windows



### Shelter in concrete buildings

Concrete buildings have more sheltering effect from radiation and are more airtight than wooden buildings, which can reduce the amount of people's radiation exposure.

### OK to have food and drinks stocked inside of the buildings

Cover food with plastic wrap or a lid and keep it in the refrigerator.



### Obtain correct information

It is important to obtain correct information from the TV or radio.



### Rinse off radioactive substances from your body

When you come home, wash your face and hands, gargle and change your clothes. It is also important to take a shower to rinse radiation off from your body.  
(Keep the clothes you took off in a plastic bag and close it tightly.)

**Keep calm and wait until you receive new instructions or information.**





# Where should you evacuate?



## To foreign residents

You should submit your residence report (report to inform your country that you currently live in Fukui city) to your country' s Embassy in Japan. It is important for the Embassy to have your information in case of a disaster. Please contact the Embassy to ask how to make a report.

### In case of earthquake

**Elementary schools in each area** will be used as shelters. According to the number of refugees or damage situations, junior high schools and other public facilities will be used as shelters sequentially. Community centers will be used as bases for disaster-prevention related activities, so will not be used as shelters.

### In case of storm and flood

**Community centers in each area** will be used as shelters. According to the number of refugees and flood damage situations, elementary schools, junior high schools and other public facilities will be used as shelters sequentially.

※ You should basically evacuate to the shelter in your community, however; if you cannot go to the shelter because of severed roads or other reasons, go to the shelter where you can safely go.

**Be well informed,  
Be held together,  
Be aware of  
Prepare for disaster!!**



Fukui City Official Mascot  
Asakura Yumemaru