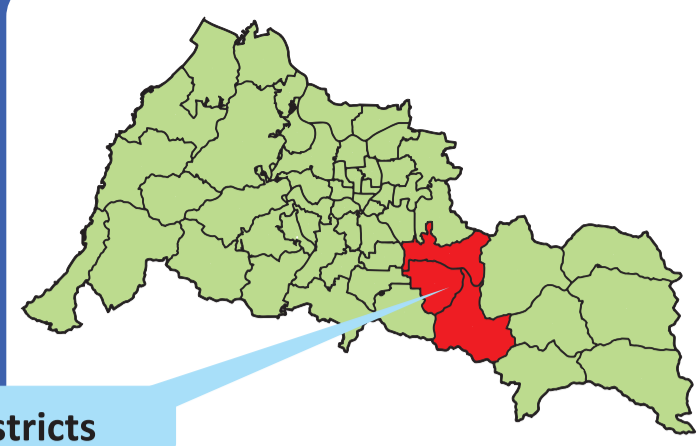


Fukui City
Flood & Landslide Hazard Map
Detailed map of each district

⑧ Sako • Ichijo • Togo districts



Rivers that flow through this area

Asuwa River Kanomata River
Ichijodani River

Points to consider when viewing this map

The flooding areas and their inundation depths depicted on this map are estimated based on many points of possible embankment collapses and their maximum effect.
It is not likely that all areas will be flooded at once.

Legend

For the latest evacuation shelter information, please check Fukui City's website.



First available designated shelter

First available evacuation shelter in the district as the risk of a disaster increases



Designated shelter

Evacuation shelters where local residents
• who evacuate due to the threat of disaster can stay for the necessary period of time until the danger goes away
• who are unable to return to their home as a result of damages caused by a disaster can stay temporarily
※ Please be careful as it may not be opened.

District boundaries

Area boundaries

National road and prefectural road

Water level monitoring station

Live camera

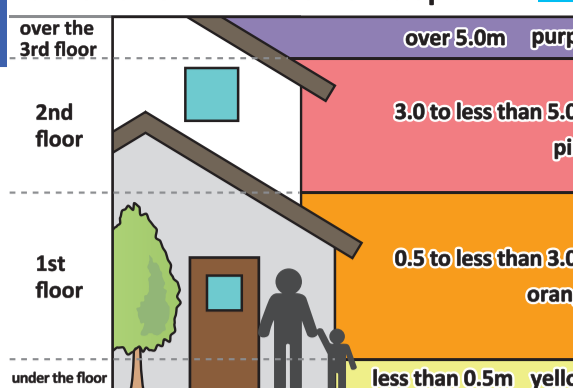
Dangerous areas during flooding

underground passage (for cars and pedestrians)

underground passage (for pedestrians only)

underground car park

Criteria for inundation depth



For more information on inundation depth...

Fukui Prefecture Flood Damage Hazard Information

QR code

Areas at risk of landslides

Landslide Caution Zone (Yellow Zone)

Landslide Special Caution Zone (Red Zone)

Areas where houses may collapse or be washed away due to strong currents

Flood Destruction Zone

Landslides may cause sudden and heavy damages. Landslides may still occur after the rain has weakened so caution is needed.

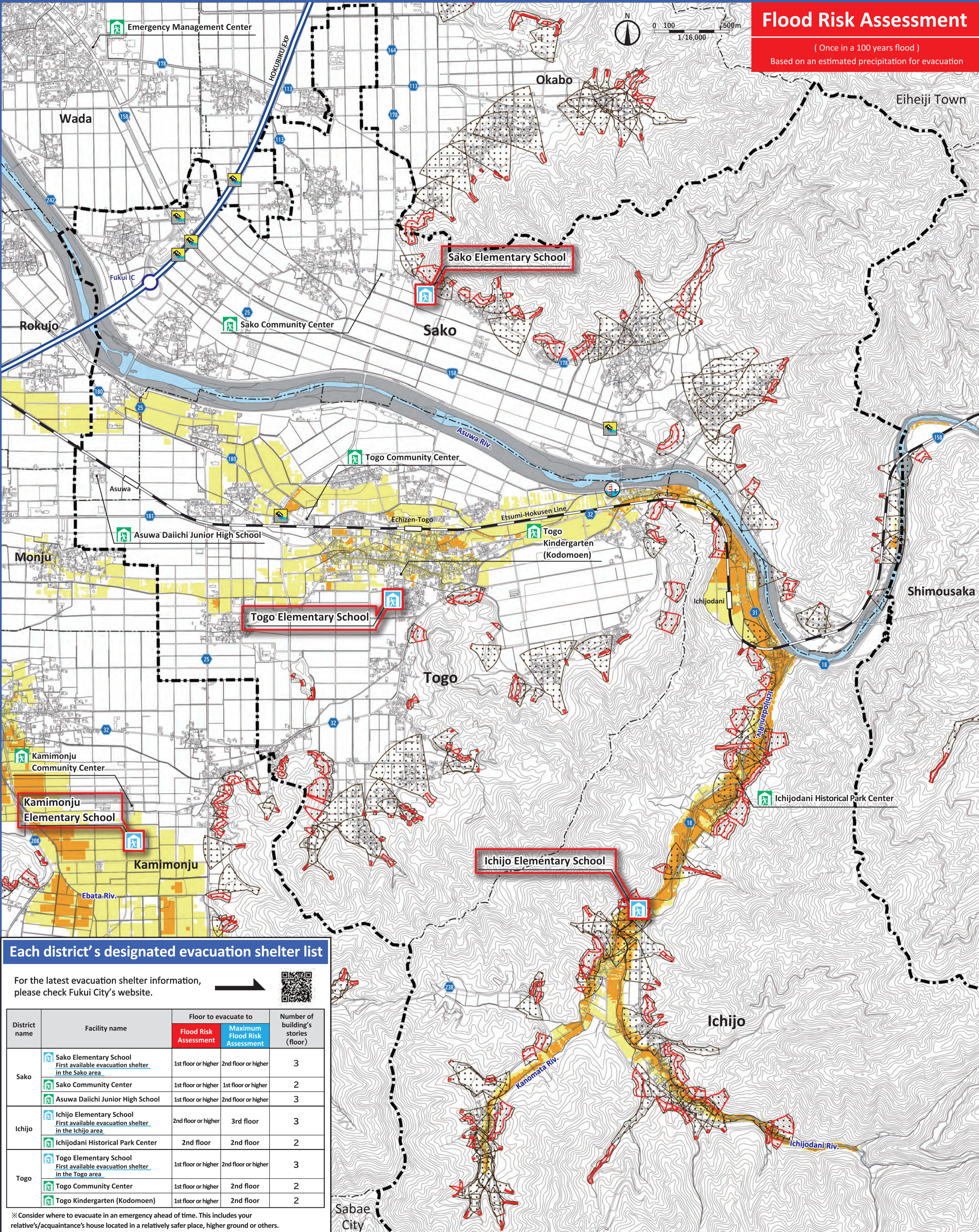
Areas where landslides may cause death or injury to residents when they occur

Areas where landslides may cause structural damage as well as death or significant injury to residents when they occur

Areas where strong flood flows/embankment collapses may cause to destroy or wash away houses/buildings

Only applies to the "Maximum Flood Risk Assessment"

For evacuation instructions, please refer to "8. Check the Map!" on the back.



Flood Risk Assessment

(Once in a 100 years flood)

Based on an estimated precipitation for evacuation

Maximum Flood Risk Assessment

(Once in a 1000 years flood)

Based on a maximum estimated precipitation

6 Methods of Evacuation

Evacuate to a relative or friend's house in a safe area
• Be sure to consult your relatives/acquaintances about evacuation ahead of time.

Evacuate to a safe hotel or Japanese inn
• Lodging fees will be charged. Make a reservation and evacuate quickly.

Evacuate to a higher ground
• Be careful of areas that are at high risk of landslides and evacuate as soon as possible.

Secure Indoor Safety
• Check the "8. Check the Map!" on the back to see if your residence is safe to stay.
• Accept other evacuees if necessary.
• Prepare about one week's amount of food supplies in advance for your family.

Evacuate to a designated evacuation shelter
• Follow the information given by the city about when designated evacuation shelters open and look out for Alert Level information. Also, be proactive about communicating with those in your neighborhood to evacuate.

Evacuate to the facility (e.g. company building) designated by the community
• Fukui City has been encouraging local communities and private businesses to cooperate with providing temporary shelter for local residents during emergencies.

※ Evacuations are to avoid possible dangers. Moving to a designated evacuation shelter is not only method of evacuation. Think about your actions according to the 6 methods above with the understanding that you should act to protect your own life.

Disaster Emergency Message Dial
The Disaster Emergency Message Dial is a voice message system for safety checks of one's family/friends and their whereabouts.

When recording messages
When playing back messages

Dial 171
Follow voice instructions

Dial 1
Dial 2

Dial your own phone number
Dial the other party's phone number
※ Include area code

While following voice instructions, record or playback the audio.
※ Recordings can be made up to 30 seconds
※ Choose a phone number within the family to be used for recordings.

How to get information

Staying updated on information during a disaster is essential. Prepare for getting information through multiple sources by checking beforehand.

Information DELIVERED to us

Emergency Broadcast System
To confirm the contents of broadcasted information...

0776-25-2914
Early Warning Email (Area email)
All cell phones within Fukui City will receive evacuation alerts.
Depending on the device, settings may need to be changed to receive these notifications.

Fukui City Disaster Prevention Weather Info Email
Evacuation alerts, weather forecasts, etc. will be provided by Fukui City.

LINE
Alert levels and evacuation information can be received here.
@fukuicity

Yahoo! Disaster Prevention Prompt Report (app.)
Evacuation information and weather forecasts can be received here.

i-ame Mail (Comprehensive Information on rivers and "SABO" in Fukui Prefecture)
Flood and landslide information will be provided here.

Information we can GATHER

TV & radio
Latest information of disaster and evacuation can be obtained by pressing the "d - button" on your TV. Radios are a good way to get information during blackouts.

Fukui City website
Weather forecasts, evacuation information, and other emergency information can be found here.
http://www.city.fukui.lg.jp/

Facebook
@Fukui.city.Bousai.Info

Twitter
@Fukuicity_Bosai

Meteorological Agency
Precipitation levels, weather forecasts, etc. can be found here.

Comprehensive information on rivers and "SABO" in Fukui Prefecture
Frequently updated photos of rivers and water level readings can be found here.

River information by the Ministry of Land, Infrastructure, Transport and Tourism